



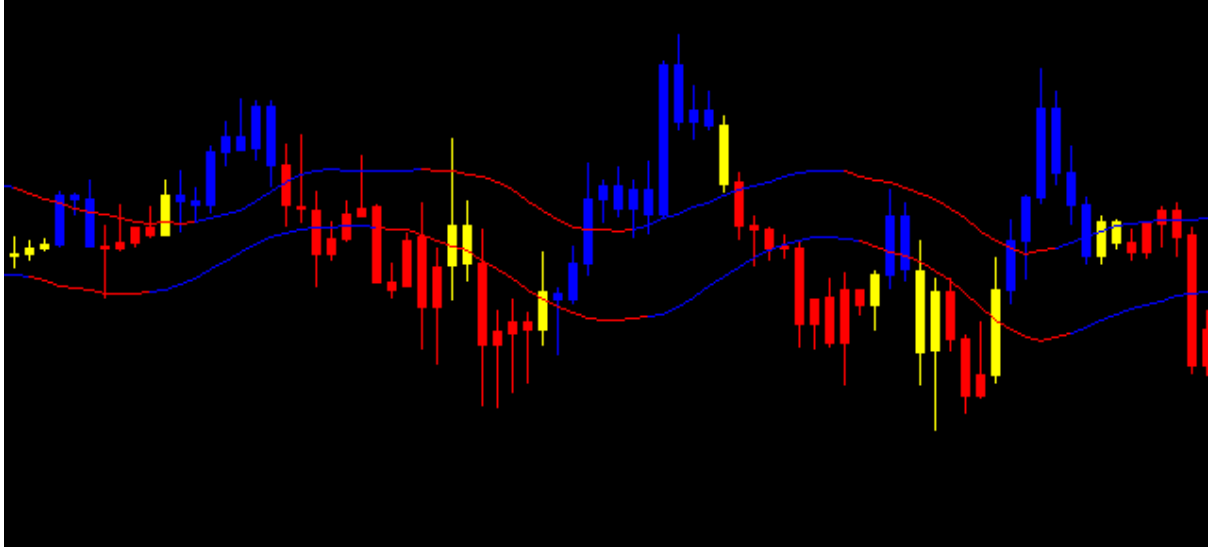
# PBF Xtreme iTunnel User Guide



**New! MetaTrader 4 Version**

## Welcome to the PBF Xtreme iTunnel User Guide

### Using the iTunnel



When the iTunnel is flat and moves sideways, the color changes back and forth between blue and red every few bars, the price penetrates the iTunnel up and down, there is no trend. Either stay out, or execute "hit and run" type of trades.



When the iTunnel is blue and going up, or red and going down with a

good angle, the market is trending.

Enter a position near the lower band for long positions, or a short position near the upper band, and trail the stop just slightly below or above the band on the other side often yield good results. It measures the market's volatility and keeps you in the trade longer and filters out the noise.

---

**Copyright © Paint Bar Forex 2011. All rights reserved.**

Any redistribution or reproduction of part or all of the contents in any form is prohibited other than the following:

- You may print or download to a local hard disk copies for your personal and non-commercial use only;
- You may not, except with our express written permission, distribute or commercially exploit the content. Nor may you transmit it or store it in any other website or other form of electronic retrieval system.