

Super Forex Launcher

This product SUPER FOREX LAUNCHER TRADING SYSTEM, which includes all written material contained within this document, the custom indicators with all of the various set up combinations, (but excluding the MetaTrader 4 Trading Platform ®) hereinafter called "the system" is and are copyright protected. You the purchaser of the system are granted sole personal use of the system. You may not copy, hire or sell or in any other way promulgate any part or parts of the system without prior written and documented consent of the owners of the system.

U.S. Government Required Disclaimer - Commodity Futures Trading Commission Futures and Options trading has large potential rewards, but also large potential risks. You must be aware of the risks and be willing to accept them in order to invest in the futures and options markets. Don't trade with money you can't afford to lose. This is neither a solicitation nor an offer to Buy/Sell futures or options. No representation is being made that any account will or is likely to achieve profits or losses similar to those discussed on this web site. The past performance of any trading system or methodology is not necessarily indicative of future results. CFTC RULE 4.41 - HYPOTHETICAL OR SIMULATED PERFORMANCE RESULTS HAVE CERTAIN LIMITATIONS. UNLIKE AN ACTUAL PERFORMANCE RECORD, SIMULATED RESULTS DO NOT REPRESENT ACTUAL TRADING. ALSO, SINCE THE TRADES HAVE NOT BEEN EXECUTED, THE RESULTS MAY HAVE UNDER-OR-OVER COMPENSATED FOR THE IMPACT, IF ANY, OF CERTAIN MARKET FACTORS, SUCH AS LACK OF LIQUIDITY. SIMULATED TRADING PROGRAMS IN GENERAL ARE ALSO SUBJECT TO THE FACT THAT THEY ARE DESIGNED WITH THE BENEFIT OF HINDSIGHT. NO REPRESENTATION IS BEING MADE THAT ANY ACCOUNT WILL OR IS LIKELY TO ACHIEVE PROFIT OR LOSSES SIMILAR TO THOSE SHOWN. No representation is being made that any account will or is likely to achieve profits or losses similar to those shown. In fact, there are frequently sharp differences between hypothetical performance results and the actual results subsequently achieved by

any particular trading program. Hypothetical trading does not involve financial risk, and no hypothetical trading record can completely account for the impact of financial risk in actual trading. All information on this website or any e-book purchased from this website is for educational purposes only and is not intended to provide financial advice. Any statements about profits or income, expressed or implied, does not represent a guarantee. Your actual trading may result in losses as no trading system is guaranteed. You accept full responsibilities for your actions, trades, profit or loss, and agree to hold Super Forex Launcher and any authorized distributors of this information harmless in any and all ways. The use of this system constitutes acceptance of my user agreement.

Introduction

Welcome and thank you for purchasing the Super Forex Launcher strategy. You have made a very wise decision and about to unveil a powerful and consistent trading system.

In the next chapters you will learn how to trade the Super Forex Launcher system and how to use it to generate money in the Forex and other markets.

First, several issues needs to be addressed:

Money Management

Do not risk more than 1-2% of your equity on any single trade. This is a standard trading principle that should be implemented in any trading system you trade, and its purpose is to limit drawdown as much as possible and make sure you don't go into too much risk and limit your drawdown.

The Insight indicator automatically tells you the optimal trade size in any time. Please do not deviate from this values, at least until you have reach a certain level of experience.

The System

In the next chapters you will learn the system we use to generate trading signals consistently and profitably. Do not deviate from this system under any circumstances – this can lead to losses!

Stick to the system and you will win in the long-term.

Installing the indicators

NOTE: If you don't have MetaTrader installed, please download it here:

http://www.alpari.co.uk/files/site_uk/000software/MT4_set_up.exe

Follow the instructions and open a demo or real account. We recommend trading the indicator on demo account before proceeding to real accounts.

➔ *Step 1:* Copy the indicator file EX4 into your /experts/indicators/ folder. This folder is in the folder of the MetaTrader trading platform.

Examples:

If you are using Interbank FX Trader, the folder will be at

C:\Program Files\Interbank FX Trader 4\experts\indicators

If you are using Alpari MetaTrader, the folder will be at

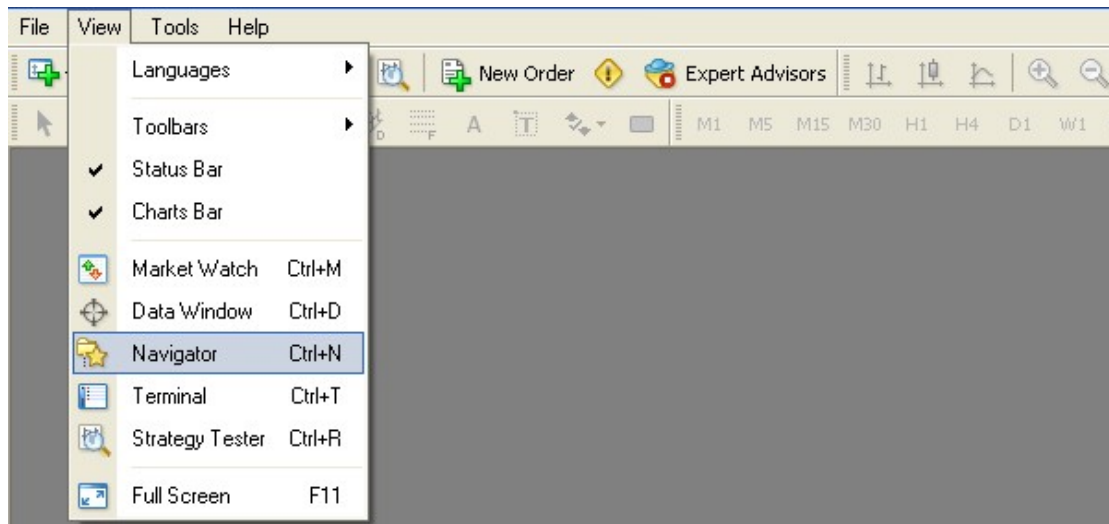
C:\Program Files\MetaTrader - Alpari\experts\indicators

If you are using FXDD, the folder will be at

C:\Program Files\FXDD - MetaTrader 4\experts\indicators

If you can't find your /experts/indicators/ folder, please contact our technical support.

➔ *Step 2:* Open the MetaTrader ® platform, and click on View -> Navigator. You can also click on CTRL+N.



➔ *Step 3:* A window titled 'Navigator' should appear. Click on Custom Indicators.

Step 4: You should see the Super Forex Launcher Indicators at the Custom Indicators folder. Double click on the indicator and click OK to load it onto your chart.

Here is a **video** showing how to install indicators in MetaTrader platform:

<http://www.youtube.com/watch?v=F-VusM-Q8rw>

About the Indicators

The Super Forex Launcher is a package of 3 indicators designed to generate leading and consistent trading signals. We will now go through each and every indicator.

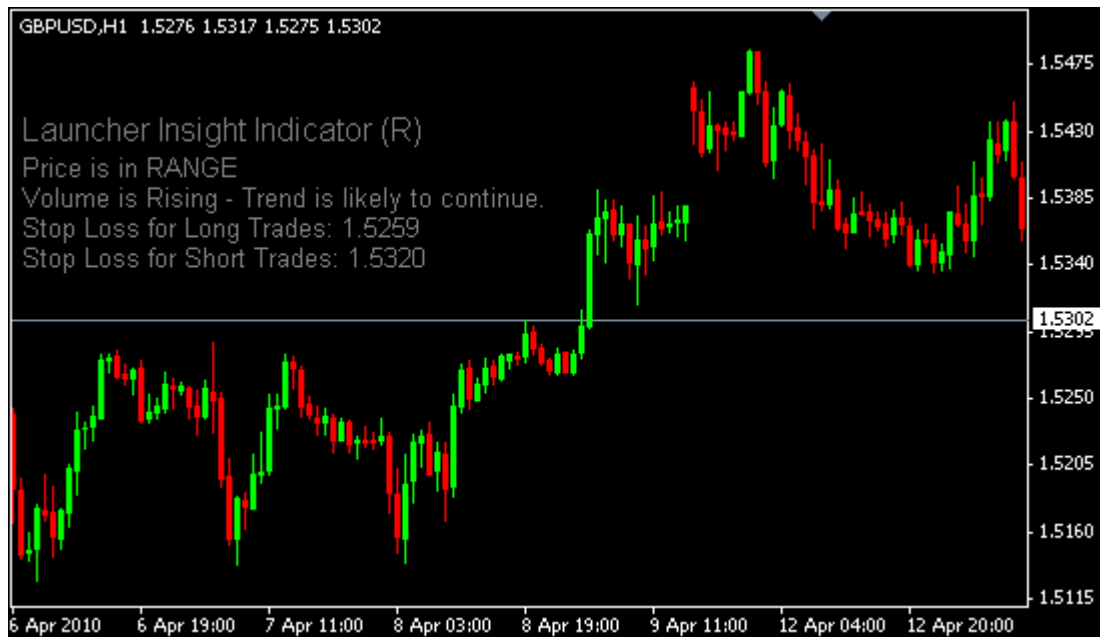
Launcher TRX



The Launcher TRX Indicator is a trading bands based on volatility and volume. It gives you precise support and resistance areas at which price is likely to reverse.

On the upper band we will take short trades and at the lower band we will take long trades.

Launcher Insight



The Launcher Insight indicator is an indicator designed to give you valuable information about the markets – information that is usually hidden from the ordinary trader.

The Insight indicator tells you if price is in range or trend, announce any sudden buying or selling pressure, and most importantly: analyzes the volume to give you early signals of trend reversal.

The Insight indicator also shows you the trade size at any point, so you don't need to calculate your risk manually.

Launcher Directional



The Launcher Directional indicator is a multi-functional trend indicator that is designed to:

- a. Give you direction of the general trend in a clear way.
- b. Draw exact support and resistance levels on the screen, to achieve a higher win rate for our trades and a greater profitability.

Identifying Trades

The first step towards identifying trade is a bounce of price on the Launcher TRX indicator.

Long Trades

➔ Price should **touch** the upper band (blue) of the Launcher TRX indicator.



➔ After the touch is confirmed we will need the price to touch the upper line of the directional indicator.



➔ The directional indicator must confirm the trade: that is, for long trades it must trend upwards. You will see a message on screen telling you which trade to enter (Long or Short)

➔ After all conditions are fulfilled, wait for a candle to exceed the previous candle's high:



Short Trades

➔ Price should **touch** the lower band (red) of the Launcher TRX indicator.



➔ After the touch is confirmed we will need the price to touch the upper line of the directional indicator.



➔ The directional indicator must confirm the trade: that is, for short trades it must trend downwards. You

will see a message on screen telling you which trade to enter (Long or Short)



➔ After all conditions are fulfilled, wait for a candle to exceed the previous candle's low:



Stop loss

The Stop Loss is automatically calculated by the Insight Indicator, so don't calculate it manually.



The stop loss is automatically very tight but big enough not to cause early exit.

Take profit and exits

For exit we use multiple exit conditions:

1. If the Insight indicator identifies a downtrend in the volume, exit the trade. You will see a message on screen telling you that the trend is about to stop.
2. If price has reached the opposite line at the Directional indicator, exit the trade:



Trades

Examples for trades:





Money management

As a general rule of thumb for all of your trading systems, do not risk more than 1-2% of your equity on a single trade. Risking more can lead to big losses even with the best trading system.

The Launcher Insight indicator gives you automatic trade size for all your trades, so your equity is safe and your drawdowns minimal.